

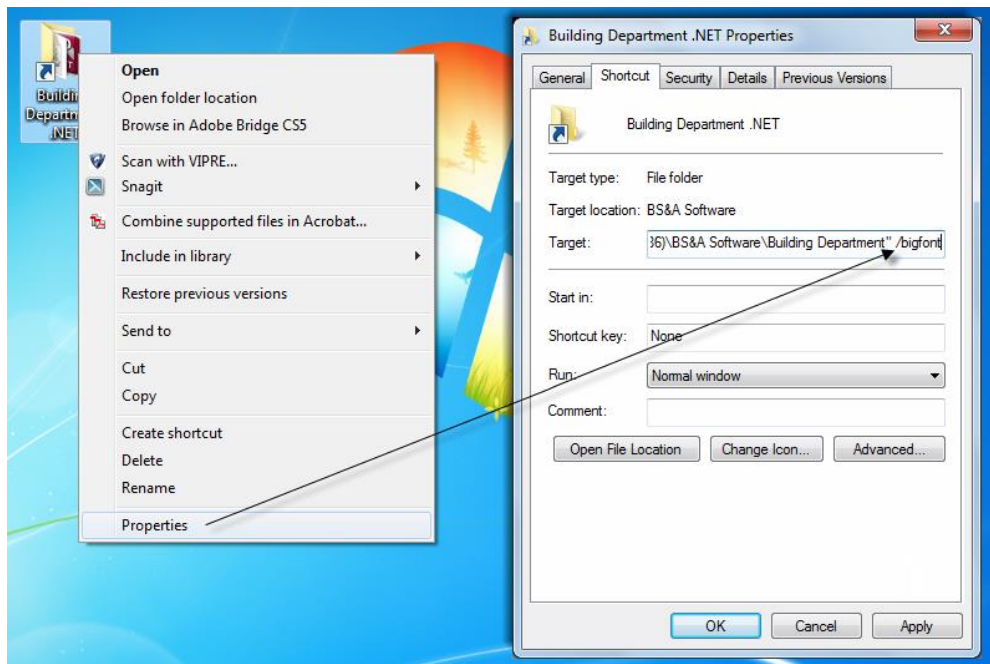
# Changing the Program Font Size

Questions? From your BS&A program, go to **Help>Contact Customer Support** and select **Request Support Phone Call** or **Email Support**. Or, you may call us at (855) 272-7638 and ask for the appropriate support department. Questions for our I.T. department may be submitted by phone (same number), or by emailing [tech@bsasoftware.com](mailto:tech@bsasoftware.com).

You have two options: use the bigfont property to change font size in the Application Views pane and the Menu Bar, or use the Tree Font Size user setting to adjust the font size in the Application Views pane only.

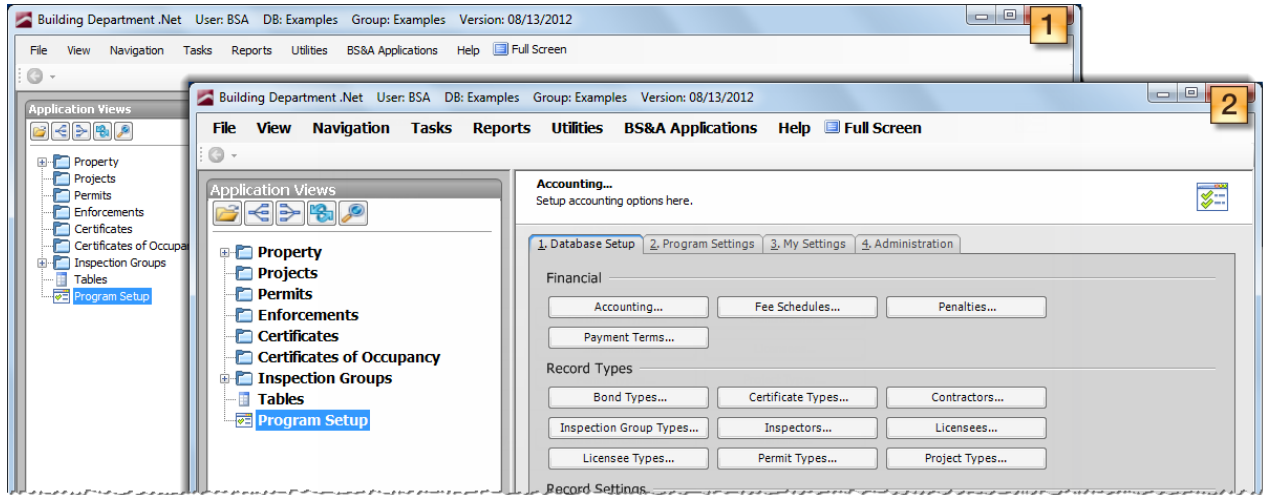
## bigfont Property

1. Right-click on the Building Department .NET shortcut (this may be on your desktop - as pictured - or in an Equalizer .NET Applications folder).
2. Click **Properties**.
3. At the end of the text in the Target field, type a space, then **/bigfont**.



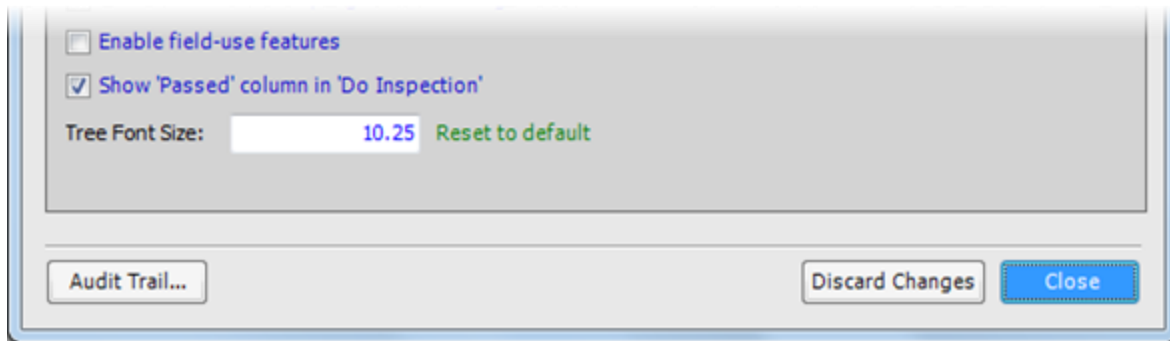
4. Click **Apply**, then **Ok**.

Figure 1 shows the original, default size; figure 2 shows the increased font size.



## Tree Font Size User Setting

1. Click **Program Setup**>**My Settings**>**My Preferences**.
2. Enter the size you want in the **Tree Font Size** field (the default is 8.5).



3. Click **Close**.
- The items in the Application Views pane change size according to your entry (the Menu Bar is unaffected).