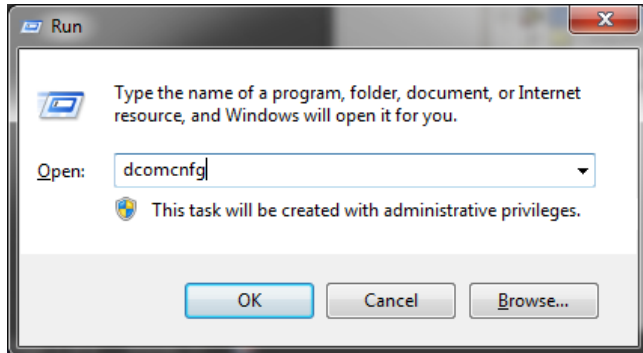


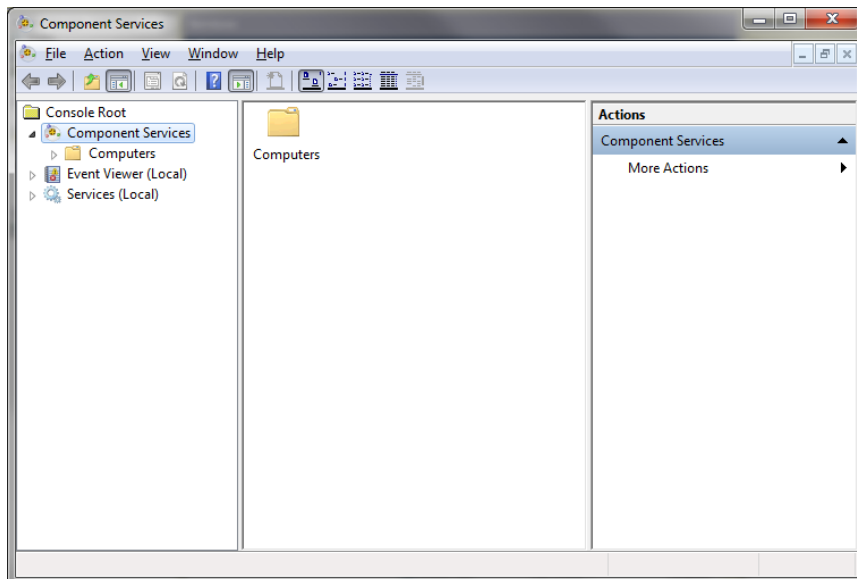
MSDTC Configuration for Windows 7, Server 2008 or Greater

Questions? Call us at (855) 272-7638 and ask for the I.T. Team, or email itsupport@bsasoftware.com.

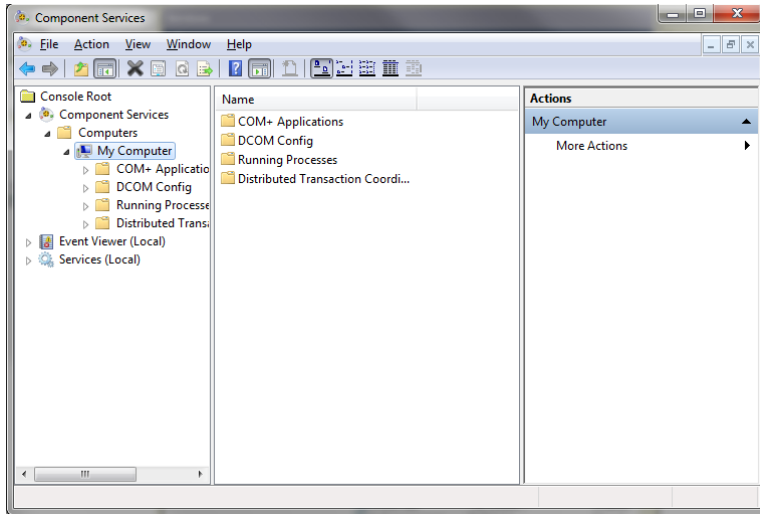
1. From the workstation, go to Start/Run and type DCOMCNFG.



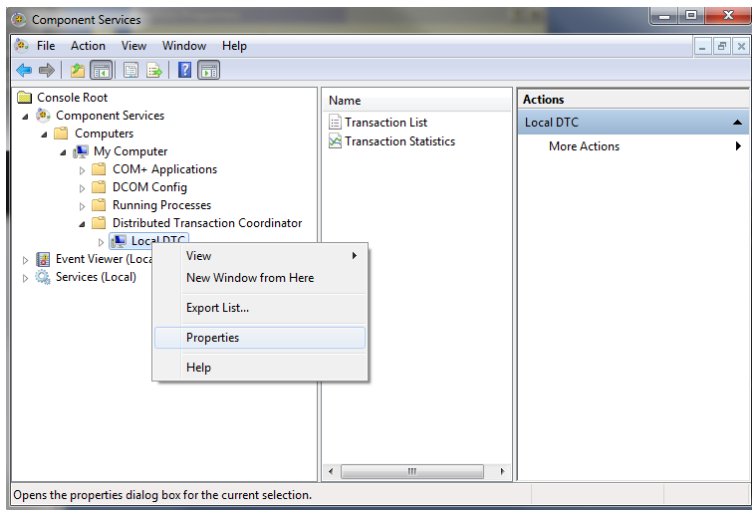
2. Click Ok.
3. Click the arrow to the left of Component Services.



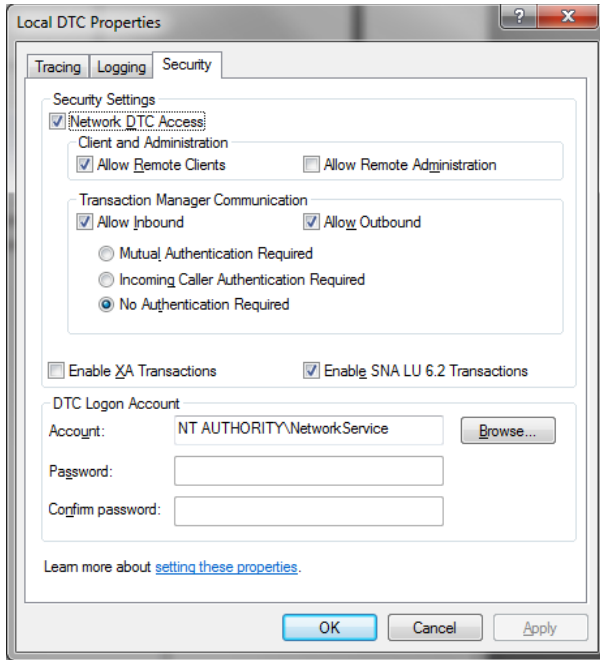
4. Click the arrow next to Computers, then the one next to My Computer.



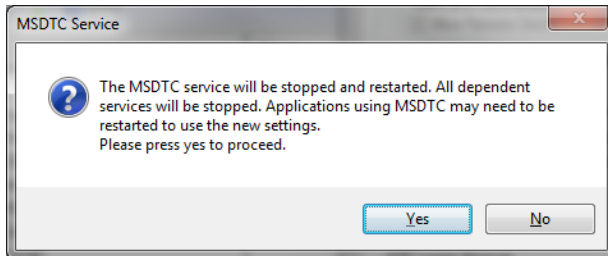
5. Click the arrow next to Distributed Transaction Coordinator.
6. Right click Local DTC and choose Properties.



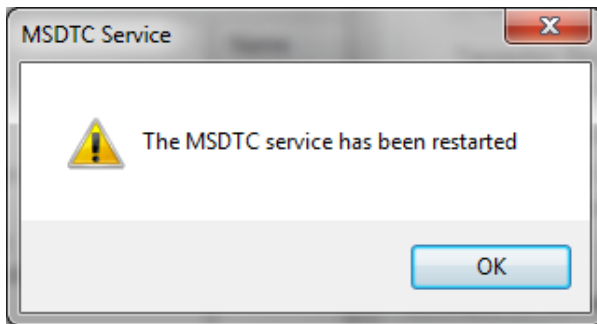
- Click the Security tab and verify that the items pictured below are checked.



- Click Ok. The following message pops up.



- Click Yes. The following message pops up.



- Click Ok.
- Click File/Exit.

MSDTC is now properly configured.